



ROSSI®

INSTRUCTION MANUAL

Rossi® Shotgun ST-12



GENERAL SAFETY, OPERATING INSTRUCTIONS AND LIMITED WARRANTY

READ CAREFULLY BEFORE USING YOUR FIREARM

Important: Keep this manual with your firearm.

The information contained in this manual is useful, both for beginners and experienced shooters. In addition to important information about the function, cleaning and care of the firearm, this manual contains instructions that will be very helpful in shooting safely.

The most important rule of safe firearm handling is always keep the muzzle pointed in a safe direction!

TO OUR CUSTOMERS

Congratulations on the purchase of your new Rossi firearm. Like any precision instrument, if properly cared for, your Rossi should give you years of shooting enjoyment. Please take the time to read and understand the warnings and instructions contained in this owner's manual. This manual should be kept with your firearm. Upon change of ownership, transfer this manual with the firearm.

WARNING

Never allow a minor to shoot without adult supervision. Never leave a firearm in the possession of a minor. When shooting with a minor, make sure to remain close and safely supervise all activities. Always make sure to store unloaded firearms and ammunition separately.

NOTICE

Record below the model number, serial number and date of purchase of your Rossi firearm for future reference. Be sure to retain your store receipt and any other documentation that came with your Rossi.

Model Number	
Serial Number	
Date of Purchase	

TABLE OF CONTENTS

5	Firearm Safety
7	Technical Specifications
8	Firearm Safety Systems
9	Get to Know Your Firearm
10	Firearm Storage and Gun Locks
12	Ammunition
13	Manual Safety
15	Operating Instructions
19	Failure to Fire
19	Disassembly
22	Care and Maintenance
24	Assembly
27	Precautions and Care
28/29	Exploded View Parts List
30	Rossi Service Policy

WARNING

The safety warnings in this booklet are important. By understanding the dangers inherent in the use of any firearm, and by taking the precautions described herein, you can safely enjoy your Rossi firearm. Failure to follow any of these warnings can result in serious injury to you or others, as well as severe damage to the firearm or other property.

ROSSI

ALWAYS KEEP THE MUZZLE POINTED IN A SAFE DIRECTION
AND FINGER OFF THE TRIGGER.

NOTES

SIGNAL WORDS AS DEFINED BY ANSI Z535.6 AND Z535.4 STANDARDS.

⚠ DANGER

DANGER indicates a hazardous situation which, if not avoided, will result in death or serious injury.

⚠ WARNING

WARNING indicates a hazardous situation which, if not avoided, could result in death or serious injury.

⚠ CAUTION

CAUTION indicates a hazardous situation which, if not avoided, could result in minor or moderate injury.

NOTICE

NOTICE is used to address practices not related to physical injury.

FIREARM SAFETY

⚠ WARNING

When a firearm discharges, the bullet or shot can strike a person resulting in death or serious bodily injury.

The three basic keys to safe handling of firearms:

1. **KEEP THE MUZZLE POINTED IN A SAFE DIRECTION.** Even if the firearm discharges, if the muzzle is pointed in a safe direction, no one will be injured.
2. **KEEP YOUR FINGER OFF THE TRIGGER UNTIL YOU ARE READY TO FIRE.** If you maintain good trigger discipline, it is extremely unlikely the firearm will fire.
3. **NEVER TRUST ANY SAFETY MECHANISM.** If you adopt the attitude that you will not trust any safety mechanism, you will be vigilant about keeping your finger off the trigger and keeping the muzzle pointed in a safe direction.

⚠ WARNING

KNOW YOUR TARGET. Never fire at targets at close range. Ricochets can and do cause death or serious bodily injury. What constitutes “close range” depends on many factors including target material, bullet caliber and angle of impact.

KNOW WHAT IS BEHIND YOUR TARGET. Unless you are shooting into a bullet trap designed to capture the type of ammunition you are firing, projectiles may pass through the target and strike anyone or anything beyond. Bullets can travel miles.

ALWAYS WEAR HEARING PROTECTION. Firearms are loud. The sound they generate is greater indoors. Repeated exposure to loud noises can cause deafness. Hearing protection is rated by decibel reduction. Look for “dB” reduction of 30 or more when purchasing ear protection. Modern ear protection can allow normal hearing until the sound from the discharge reaches the ear. By layering hearing protection, for example wearing 30db rated foam plugs along with 20db rated ear muffs, significant protection can be achieved.

ROSSI

ALWAYS WEAR EYE PROTECTION. In normal operation, firearms emit hot high-velocity gases, particles and metal. These materials flying into your eye can cause blindness. Protect your vision with proper eye protection. Any eye protection may be better than none, but look for ANSI Z87.1-2003 certified eyewear for the best protection.

NEVER HANDLE FIREARMS WHILE UNDER THE INFLUENCE OF DRUGS OR ALCOHOL. Firearms are dangerous. Handling firearms while impaired by drugs or alcohol is foolhardy and can result in serious injury or death. This warning includes prescription drugs that contain a warning about using machinery or driving while taking the medication.

MODIFIED FIREARMS ARE DANGEROUS, AND USE CAN RESULT IN SERIOUS INJURY OR DEATH. “Trigger jobs,” polishing original components or installing aftermarket parts can cause a firearm to function in ways different than intended. Some such work may also be illegal.

DAMAGED FIREARMS ARE DANGEROUS, AND USE CAN RESULT IN SERIOUS INJURY OR DEATH. Repairs should always be made by a qualified gunsmith or by a factory-authorized repair site. Work done by those unfamiliar with the design can cause a firearm to function in ways different than intended.

NEVER ATTEMPT TO DISASSEMBLE OR CLEAN A LOADED FIREARM. DOING SO CAN RESULT IN SERIOUS BODILY INJURY OR DEATH. How often have we heard “But it went off while I was cleaning it!” or, “I did not know it was loaded!” or, “It was jammed, and I tried to take it apart!”?

IF A FIREARM GOES OFF, THERE WAS A ROUND OF AMMUNITION IN THE CHAMBER. Period. “Clear” (or empty) the firearm of all ammunition before disassembling or cleaning.

As owner of your new Rossi firearm, you are responsible for (1) keeping your finger off the trigger, (2) pointing the muzzle in a safe direction, (3) removing ammunition from the firearm, and (4) looking and feeling in the chamber to confirm the firearm is empty. An empty firearm cannot fire.

TECHNICAL SPECIFICATIONS

MODEL	ST12
CALIBER	12 GA (3" Chamber)
OPERATION	Pump Action
CAPACITY	5 + 1 (2¾")
BARREL	18"
OVERALL LENGTH	38.3"
SIGHT	Bead Sight
SAFETY	Crossbolt
MATERIAL	Trigger Guard: Synthetic
	Stock: Synthetic
	Forearm: Synthetic
	Receiver: Aluminium
FINISH	Blued
CHOKE	Cylinder

ROSSI

ALWAYS KEEP THE MUZZLE POINTED IN A SAFE DIRECTION
AND FINGER OFF THE TRIGGER.

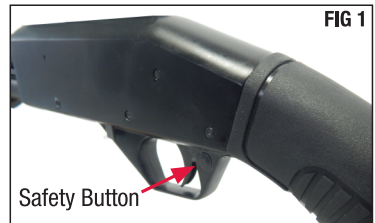
FIREARM SAFETY SYSTEMS

Firearm safety is supported by a system. With your firearm, the system is made up of the following:

1. **You!** Your involvement in safety cannot be overemphasized. No safety component can keep your finger off the trigger and the muzzle pointed in a safe direction. Also, you are the key to never trusting any of the mechanical parts of the safety system.

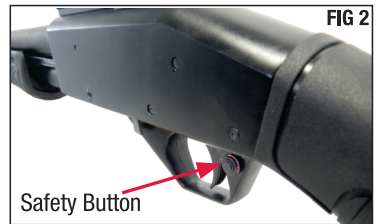
2. **Manual Safety -**

The safety button is located at the rear of the trigger guard and must be manually pressed to the desired position. See fig 1 and fig 2.



(Manual Safety ON)

3. **Trigger Guard -** This is a physical obstruction that helps prevent unintended pressing of the trigger. Do not modify the trigger guard.

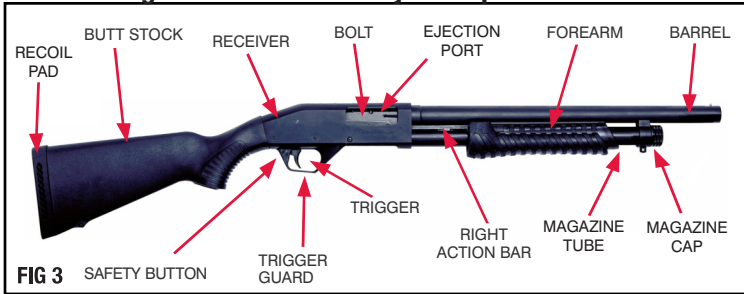


(Manual Safety OFF - Fire)

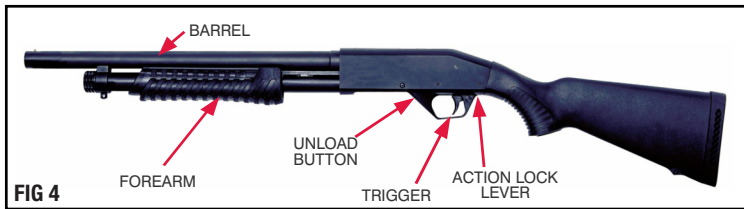
4. **This Manual -** Rossi intends for you to use this manual to learn about your firearm and to help you use your firearm safely. If you use the manual, you will be a long way toward being a knowledgeable and safe firearm owner.

GET TO KNOW YOUR FIREARM

Shooter's Right Side: Side of the ejection port.



Shooter's Left Side: Side of the unload button.

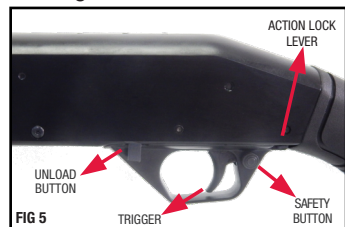


Trigger - The shotgun will fire when the safety button is disengaged (**the red band will be visible**) and the trigger is pulled. The trigger pull has been set at the factory. Any adjustment in the parts of the safety mechanism, trigger assembly or disconnecter, should be made by the factory, or by a qualified gunsmith, to ensure the safety of the shotgun. Never put your finger on the trigger if you are not ready to fire at the target.

Action Lock Lever - This part is located on the left side of the firearm behind the trigger housing on the trigger guard area. Activating the action lock lever allows the opening of the firearm, even in the cocked condition. If there is a shotshell in the chamber, it will be ejected out of the ejection port.

Unload Button - This part is located on the left side of the firearm. When activated, it allows shotshells loaded in the magazine tube to be removed.

Forearm - The forearm serves as a support for the shooter and cycles the slide bolt mechanism. To open the mechanism, press the action lock lever and then slide the forearm to the rear.



ROSSI

FIREARM STORAGE AND GUN LOCKS

How you secure your firearm is a personal choice based on the unique circumstances in your home, business or vehicle and the laws of the state where your firearm is located. Any choice you make about securing your firearm will present advantages and disadvantages. You must weigh those advantages and disadvantages and choose which security method is best for you and those around you.

⚠ WARNING – LOCKING DEVICES

- Always keep your firearm pointed in a safe direction, including when you are installing or removing your locking device.
- Always verify that your firearm is completely unloaded (see page 11) before installing your locking device.
- Do not install locking devices in the trigger guard; always keep your fingers and locking devices outside the trigger guard during device installation and removal.
- Store firearms, ammunition and keys separately and securely, away from children and careless adults; do not store your firearms with the keys in the locking device.
- Do not attempt to work the action on your firearm with the locking device in place; this may damage your firearm.
- While locking devices are an important aid to security measures, they are not a substitute for safe firearm handling and proper storage. Remember that any mechanical device can be bypassed with enough time, knowledge, determination and equipment.

LOCKING DEVICES MUST BE USED SAFELY AND RESPONSIBLY

It is important to use the locking device on your Rossi firearm!

Keep the muzzle pointed in a safe direction and your fingers outside the trigger guard at all times during installation of the locking device!

To install the Factory-Supplied Locking Device:

1. Open the action completely and verify that the firearm is completely unloaded and contains no cartridges or cartridge cases!
Use the action lock lever to keep the action open during installation of the locking device.
2. Insert the cable directly into your shotgun as shown in fig 6.



3. To lock: With the key turned to the farthest clockwise position, insert the loose end of the cable into the lock. Turn the key counterclockwise and remove the key.
4. Once the lock is securely closed, pull firmly on the lock to test the connection and be sure it is locked. **Do not leave or store your firearm with the key in the lock!** Store your locked, unloaded firearm and the key in secure, separate locations, away from ammunition, children and unauthorized adults.

⚠ WARNING



Never leave your keys in the lock when the lock is installed on the firearm.

ROSSI

ALWAYS KEEP THE MUZZLE POINTED IN A SAFE DIRECTION
AND FINGER OFF THE TRIGGER.

WARNING

Failure to secure a firearm may result in injury or death. Properly securing a firearm means storing your firearm unloaded, and securely locked, with all ammunition in a separate location.

AMMUNITION

WARNING

Using the wrong ammunition in your firearm can result in serious bodily injury and damage to your firearm. Make certain the ammunition you load in the chamber is the same caliber as marked on the barrel.

WARNING – AMMUNITION AND INDUSTRY STANDARDS

Use only clean, dry factory-loaded ammunition. Old, damaged, wet or oily ammunition may fire at pressures higher than industry standard, causing injury to you and bystanders or damage to your firearm.

Do not use reloaded ammunition in your firearm. Its firing pressures are unknown and may well exceed industry standard, causing injury to you and bystanders or damage to your firearm.

Odd sounds are signs of trouble. If a round “does not sound right” when it goes off, stop firing right away. A bullet may be stuck in the barrel. Firing the firearm in this condition may cause pressures higher than industry standard, causing injury to you and bystanders or damage to your firearm.

If you hear any odd sounds in between shots, immediately stop firing. If there is any reason to suspect that the barrel is obstructed, immediately unload the firearm and clear the chamber in accordance with instructions located on page 22 in this manual. It is not sufficient to merely look in the chamber. The bullet may be lodged in the barrel where it cannot easily be seen. Do not fire the firearm again, and take it to a qualified gunsmith.

⚠ WARNING

If the bore is obstructed, DO NOT attempt to shoot it out by using another cartridge or by blowing it out with a blank. Such techniques can generate excessive pressure, damage the firearm and cause serious injury.

⚠ WARNING

LEAD AND HAZARDOUS CHEMICAL EXPOSURE

Discharging firearms in poorly ventilated areas, handling, and /or cleaning firearms or handling ammunition can expose you to chemicals including lead which is known to the state of California to cause cancer and birth defects or other reproductive harm.

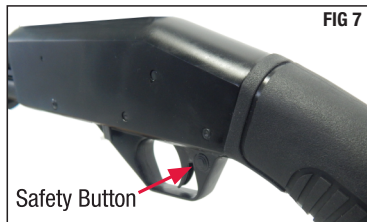
For more information, go to www.P65Warnings.ca.gov

Have adequate ventilation at all times. Wash hands thoroughly after exposure with soap and water.

The use of reloaded, “remanufactured,” hand-loaded, or other nonstandard ammunition voids all warranties. Improperly loaded ammunition voids all warranties. Improperly loaded ammunition can be extremely dangerous. Severe damage to the firearm and serious injury to the shooter or to others can result. Always use ammunition that complies with the industry performance standards established by the Sporting Arms and Ammunition Manufacturers Institute, Inc., of the United States (SAAMI).

MANUAL SAFETY

This firearm is manufactured with a manual safety – USE IT!



NOTICE

Your firearm is equipped with the manual safety shown above. A manual safety is no substitute for safe, smart firearm handling.

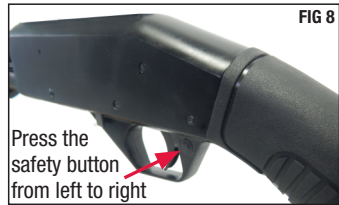
ROSSI

The safety button is located behind the trigger.

To engage the safety, push the button from the left side so that it moves all the way to the right. The button must always be pushed fully to the right until it can not move any further to be in the “ON” (SAFE) position.

Remember, a firearm’s manual safety is a mechanical device which can never replace safe firearm handling practices.

Because any mechanical device can fail, never rely 100 percent on any mechanism or safety device to prevent the dangers of careless handling or pointing a firearm in an unsafe direction.



⚠ WARNING

Do not touch the trigger while engaging the safety button.
Never keep pressure on the trigger while closing the bolt, even if the manual safety is engaged.

To put the safety in the “OFF” (FIRE) position, push the safety button fully to the left. The safety should always be in the “ON” (SAFE) position until you are on target and are ready to fire.



The safety button is designed to function only as described above and should not be reversed. **Do not** attempt to remove or reverse the button. Doing so will result in an unsafe condition which can cause serious injury or death.

The safety button is marked with a red ring for training purposes as a reminder that moving the button to the left with the red showing is the “FIRE” position, moving the button all the way to the right with the red **not** showing is the “SAFE” position.

⚠ WARNING

The danger of personal injury or death associated with cartridges, fired or unfired, becoming stuck in a firearm can be avoided by using new, clean, factory loaded ammunition and never forcing ammunition into a chamber. If you have to force ammunition into the chamber, something is wrong! Stop! Take the shotgun to a qualified gunsmith.

⚠ WARNING – ANY GUN MAY FIRE IF DROPPED

If dropped or struck, a firearm may fire.

⚠ WARNING

If dropped or struck, the firearm should be inspected by a qualified armorer/gunsmith for a complete function check. After the firearm was dropped or struck, mechanisms, including automatic safeties, may not function as intended and result in accidental death or serious injury.

OPERATING INSTRUCTIONS

⚠ WARNING

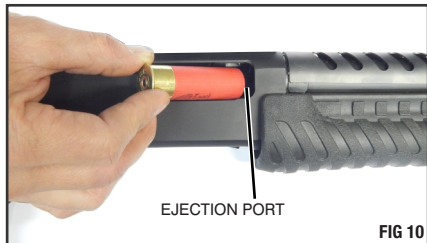
Always be sure the firearm is pointed at the target and away from other people, buildings and vehicles before firing. Do not fire into water. When finished shooting, immediately set the manual safety to the safe position.

NOTICE

Before using your firearm, check the correct tightening of the magazine cap. The cap should be tightened by hand. Do not use tools. We recommend checking the tightness of the magazine cap at least every 100 shots.

HOW TO LOAD ONLY ONE SHOTSHELL:

- 1 - Point the firearm in a safe direction.
- 2 - Move the safety button to the "ON" (SAFE) position.



ROSSI

ALWAYS KEEP THE MUZZLE POINTED IN A SAFE DIRECTION
AND FINGER OFF THE TRIGGER.

3. Slide the forearm rearward until the action is completely open. If the firearm is cocked, you must first press the action lock lever.
4. Place a shotshell of the correct gauge and length through the ejection port. There is no need to place it into the chamber.
5. Slide the forearm forward to push the shotshell into the chamber and close the action.

⚠ WARNING

The firearm is now loaded.

SHOOTING ONLY ONE SHOTSHELL

6. Keep your muzzle pointed in a safe direction.
7. Move the safety button to the “OFF” (FIRE) position.

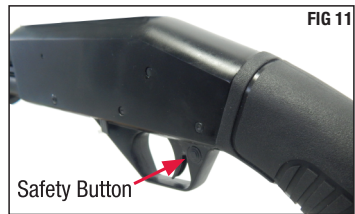
⚠ WARNING

The firearm is ready to shoot.

8. Point the shotgun at the target and be sure of what lies behind it.
9. Press the trigger to fire the firearm.
10. Slide the forearm rearward to eject the empty shotshell.

Engage Safety

Point the shotgun in a safe direction. Engage the safety by pushing the manual safety button from left to right. The **RED** band will not be visible. (fig. 11)



HOW TO LOAD THE CHAMBER AND MAGAZINE:

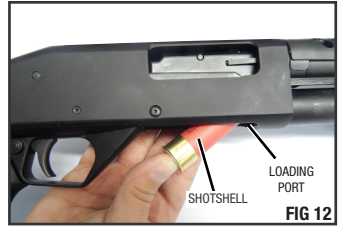
1. Repeat steps 1 through 5 from the section HOW TO LOAD ONLY ONE SHOTSHELL, on page 15.

⚠ WARNING

The firearm is now loaded.

2. To load the magazine tube, engage the safety by pushing the manual safety button from left to right in the "ON" position.

Insert one shotshell of the correct gauge and length into the loading port and push the shotshell into the tube.



Be sure the rim of the shotshell goes past the tube cartridge stop to prevent the shotshell from returning (fig 12).

Identify the position of the right cartridge stop (see page 18) if the shotshell is not properly placed and passed through it, the firearm will not be properly loaded.

3. Insert the shotshells one at a time. The magazine tube will hold five 2 3/4" shotshells or four 3" shotshells.

⚠ WARNING

The chamber and the magazine tube are fully loaded.

SHOOTING MORE THAN ONE SHOTSHELL

4. The shotgun is now loaded, with the manual safety engaged.

5. Keeping the shotgun pointed in a safe direction, disengage the manual safety by pushing the safety button to the "OFF" (FIRE) position.

⚠ WARNING

The firearm is ready to shoot.

6. Press the trigger to fire the firearm.

7. Slide the forearm rearwards to eject the empty shotshell.

8. Slide the forearm forward to put a new shotshell in the chamber.

9. Repeat the operations described in steps 6, 7 and 8 until all shotshells have been fired.

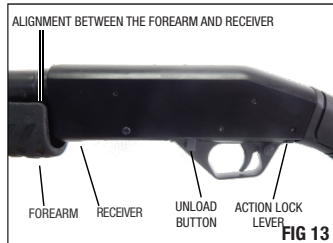
10. Place the manual safety in the "ON" position when finished firing.

The magazine tube of the firearm can be loaded only with the bolt closed and locked. The reloading of the magazine tube can be completed regardless of the number of remaining shotshells.

ROSSI

UNLOADING THE FIREARM WITH THE AID OF THE UNLOAD BUTTON

1. Point the firearm in a safe direction.
2. Engage the safety by pushing the manual safety button from left to right. The red band in the safety button should not be visible.
3. Press and hold the action lock lever.



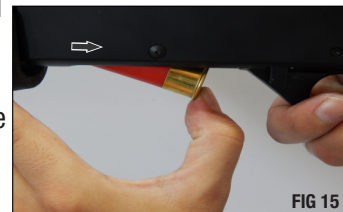
4. Extract the shotshell from the chamber (if any) by sliding the forearm all the way to the rear; tilt the firearm to the side of the ejection port so that the first shotshell can be removed.

5. Place the firearm with the loading port facing down.

6. Advance the forearm to align the rear face of the right cartridge stop with the receiver, so that the shotshell can be released from the right cartridge stop release.



7. To remove the shotshells, first place your left hand thumb on the back of the shotshell (shotshell base), which is in the magazine tube. (See fig 15).



8. Then press the unload button and let the shotshell come out free from the left cartridge stop, then release the unload button. Slide the left hand thumb back for the complete removal of the shotshell from the magazine, thus avoiding the shotshell from hitting the trigger guard.

9. You may also slide the forearm as explained on step #4 repeatedly until all shotshells are removed from the magazine tube.

⚠ WARNING

Make sure that no shotshells remain in the chamber or in the magazine tube.

WHAT TO DO IF FIREARM FAILS TO FIRE

1. Misfires – If you squeeze the trigger and the shotshell does not fire, remain in the shooting position keeping the shotgun pointed in a safe direction and wait 30 seconds. Then, cycle the action. This will eject the misfired shotshell from the chamber and load another shotshell.
2. Underpowered shotshell – An underpowered shotshell is unusual if the ammunition is new, clean, and factory loaded. However, if you hear an unusual sound or low report, you should stop firing immediately, wait a full 30 seconds, and then unload the firearm. Cycle the bolt to remove any shotshell or spent case from the chamber. Lock the bolt open. Visually and physically check the chamber to ensure the shotgun is unloaded. Then inspect the bore to ensure there is no obstruction.

DISASSEMBLY

WARNING

Always keep the muzzle pointed in a safe direction.

ALWAYS WEAR EYE PROTECTION. In normal operation, firearms emit hot high-velocity gases, particles and metal. These materials flying into your eye can cause blindness. Protect your vision with proper eye protection. Any eye protection may be better than none, but look for ANSI Z87.1-2003 certified eyewear for the best protection.

WARNING

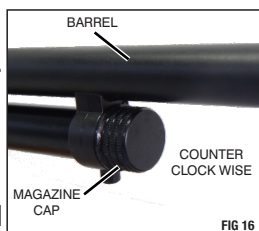
The disassembly and reassembly of the firearm are procedures that follow a strict order. For your safety, do not deviate from this order.

BARREL:

- With firearm locked open and unloaded, visually and physically check that there is no shotshell in the chamber or in the magazine tube.

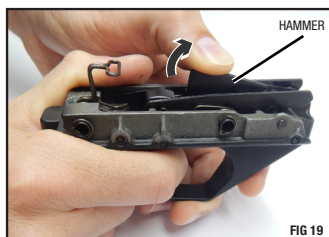
ROSSI

- Place the firearm on a clean bench, free of other objects with the ejection port facing up. Slide the forearm forward to close the action.
- Remove the cap of the magazine tube by turning it counterclockwise.
- Remove the barrel by pulling it forward and out of the receiver.



TRIGGER GUARD:

- Keep the firearm on the clean bench with the ejection port facing up.
- Keep the forearm fully forward.
- Support the receiver with a bench block or similar device to allow for the removal of the trigger housing pins. Remove the pins from the receiver with a pin punch tool.
- With your thumb press the unload button, and with your other hand pull the trigger guard out and away from the receiver.

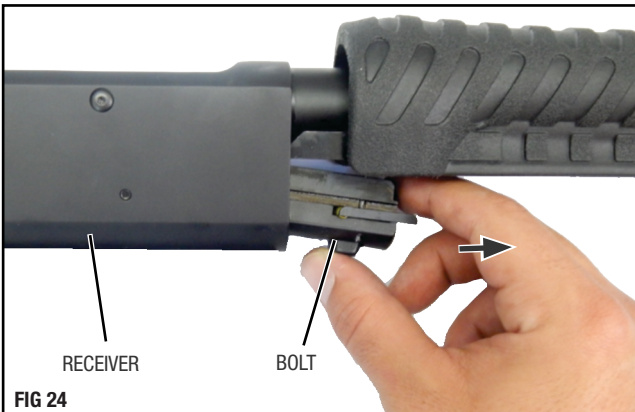
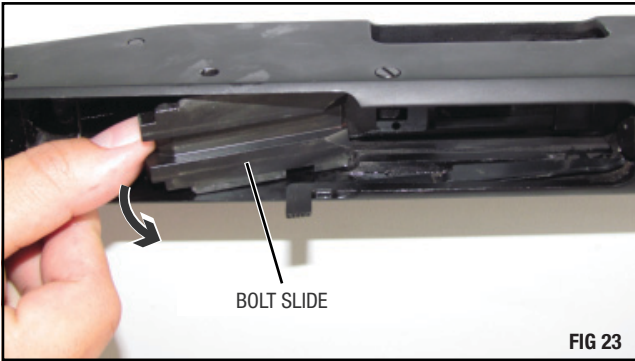
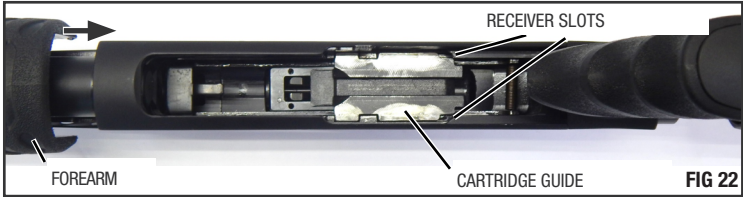


NOTICE

To uncock the hammer, hold it with one hand and with the other hand press the safety to "fire" position and press the trigger, so that you can release the hammer gently (see fig 19).

BOLT:

- Slide the forearm rearward so that the bolt slide lines up with the receiver slots. Then remove the bolt slide by pulling it up and out of the receiver
- To remove the bolt, push it forward, pulling it out of the receiver through the barrel housing.

**ROSSI**

ALWAYS KEEP THE MUZZLE POINTED IN A SAFE DIRECTION
AND FINGER OFF THE TRIGGER.

CARE AND MAINTENANCE

WARNING

Before cleaning: (1) point the muzzle in a safe direction, (2) keep your finger off the trigger, (3) place the manual safety in "ON" position, (4) slide the forearm fully rearward which will lock the bolt in the open position, (5) visually and physically inspect the chamber, bore and magazine tube, to ensure the firearm is unloaded, free, clear and safe to perform cleaning.

NOTICE

When in continuous use, clean your shotgun every 300 shots.

Cleaning - When the shotgun leaves the factory its metal parts are protected by a coat of rust preventive. This coating is designed to protect the metal parts by preventing corrosion. It is not intended to lubricate. This coating, especially inside of the barrel, must be removed before using the shotgun. On the outside surfaces, the coating should also be removed when the packing box is first opened because the coating is very sticky and easily retains dust and other solid impurities from the air.

Cleaning and Lubricating:

Barrel - Always clean the barrel from the direction of the chamber towards the muzzle. With the aid of a firearm cleaning rod, wipe the barrel with a clean cloth or bristle brush in the appropriate caliber moistened a gun cleaning solvent.

Repeat this process several times. Scrub the bore with a brass brush, also in the appropriate caliber. Remove any residue that has accumulated in the receiver and elevator. Lightly lubricate it with quality gun oil.

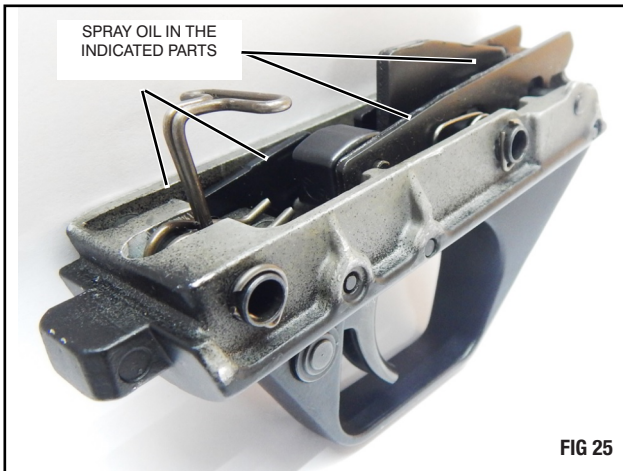
The Trigger Assembly and Bolt - Scrub with a bristle brush and gun cleaning solvent. Dry with a clean cloth. The bolt and the trigger assembly must be carefully cleaned and free of any solid residue.

Solid residue in the bolt and receiver areas may prevent the action from closing properly and a misfire may result.

After cleaning, lightly lubricate all parts with a good quality gun oil.

⚠ WARNING

Use only oil or lubricants designed for firearms.



ROSSI

ALWAYS KEEP THE MUZZLE POINTED IN A SAFE DIRECTION
AND FINGER OFF THE TRIGGER.

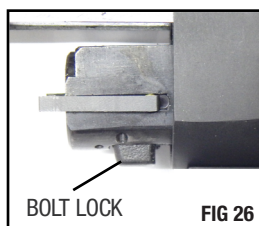
ASSEMBLY

⚠ WARNING

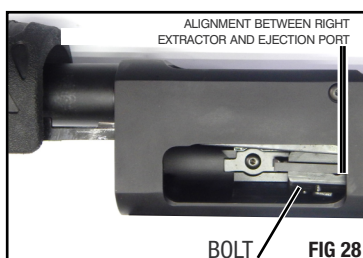
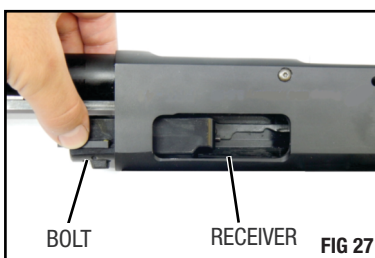
Disassembly and reassembly of the firearm are procedures that follow a strict order. For your safety, do not deviate from this order.

BOLT AND BOLT SLIDE:

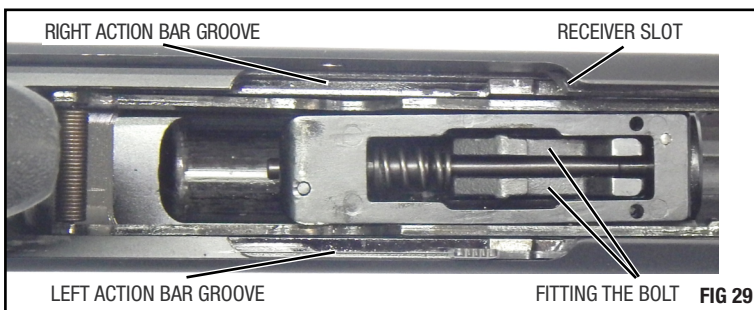
- With the firearm laterally positioned on a bench (with the ejection port facing up), put the bolt through the barrel housing, making sure that the bolt lock is properly positioned.



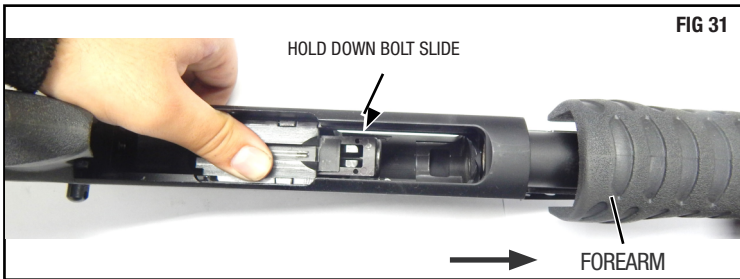
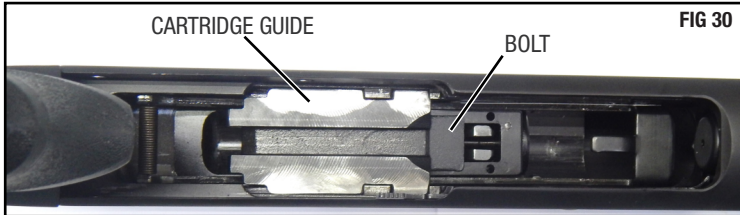
- Position the bolt so that half of the right extractor is visible through the ejection port (fig 28).



- Rotate the firearm so that the loading port faces up. Slide the forearm rearward until the grooves in the forearm's action bars are positioned slightly past the muzzle end of the receiver slot.



- Insert the bolt slide nose down so that it locks first into the bolt, and then lay the rear of the bolt slide flat into the action bars.
- Press the bolt slide down. The forearm should now be able to slide forward smoothly.



NOTICE

If the forearm does not slide forward smoothly, DO NOT FORCE IT! Carefully disassemble the bolt and bolt slide and reassemble it again.

TRIGGER HOUSING ASSEMBLY:

If the hammer is uncocked, cock it by pressing the hammer down until the travel ends. Engage the safety to the "ON" (SAFE) position before cocking the hammer.



- With the firearm laying so that the ejection port is facing up, insert the trigger housing starting with the tab on the rear.
- Push the whole set until it clicks fully into the receiver and that the holes are properly aligned. Replace the trigger housing pins, and verify the smooth cycling of the action.

ROSSI

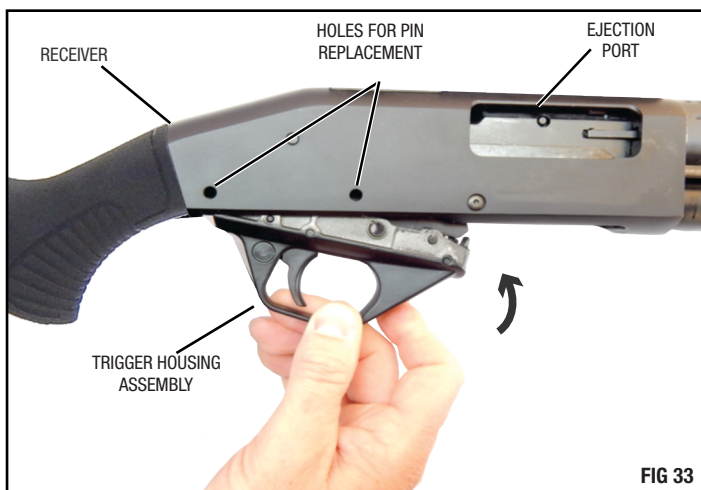


FIG 33

BARREL:

- With the firearm positioned so that the magazine tube is facing up, slide the forearm until the front of the bolt is in the center of the ejection port.

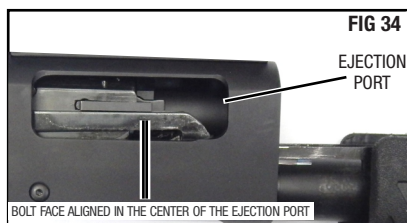


FIG 34

NOTE: If the forearm is fully advanced forward it is necessary to press the action lock lever before pulling it back.

- Insert the barrel into the receiver observing the proper fit on the magazine tube. Make sure that the barrel is fully inserted into the receiver.
- Slide the forearm rearward and make sure that the barrel has fitted in the ejector (positioned inside the receiver).
- Make sure that the barrel is firmly fixed. Do not use tools for this procedure.
- Twist the magazine cap firmly in a clockwise direction onto the magazine tube until tight.

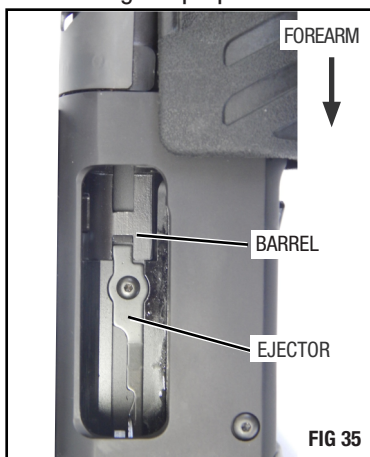


FIG 35

PRECAUTIONS, AND CARE FOR YOUR SHOTGUN

When you store your shotgun, make sure that the magazine tube and the chamber are empty. Keep the bolt closed to relieve pressure on the springs.

Handling leaves moisture prints that can cause metal parts to rust. Abrupt changes in temperature can cause condensation and moisture. Wipe the barrel and other metal parts with light oil after handling.

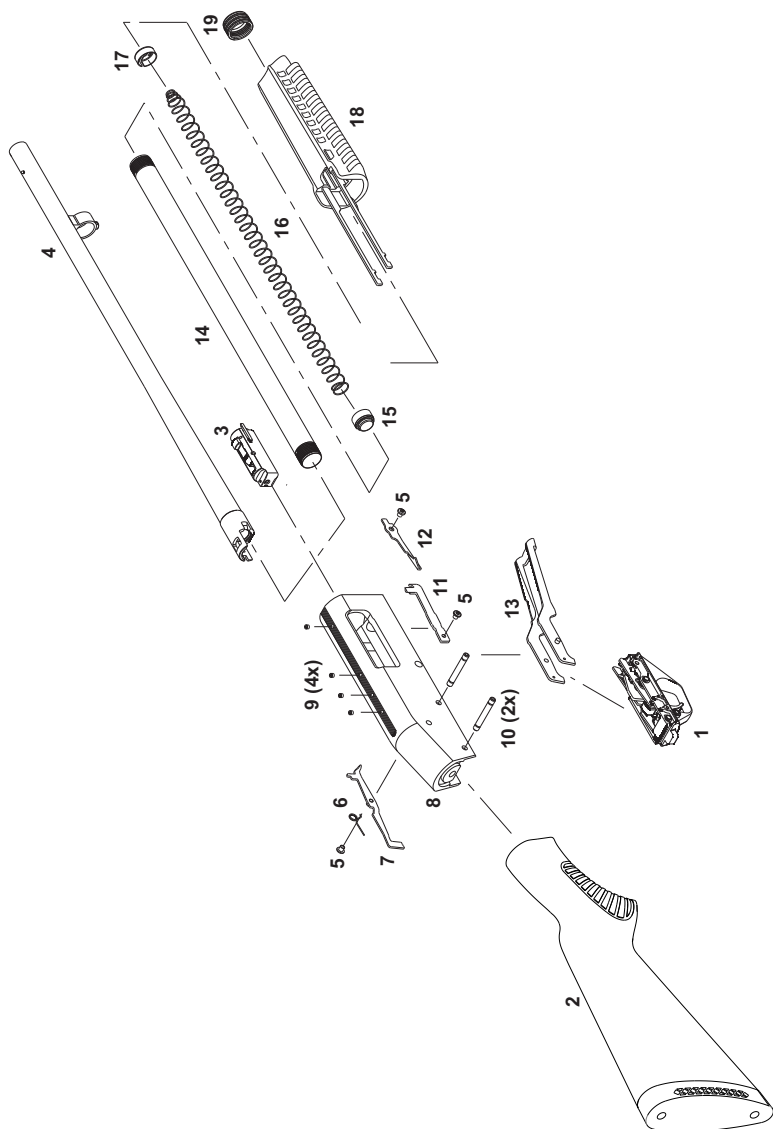
Check your shotgun periodically in order to detect any signs of rust and then remove it before it causes permanent damage to the shotgun's metal surface.

It is recommended to check the tightness of the magazine cap at least every 100 rounds.

ROSSI

ALWAYS KEEP THE MUZZLE POINTED IN A SAFE DIRECTION
AND FINGER OFF THE TRIGGER.

EXPLODED VIEW



ALWAYS KEEP THE MUZZLE POINTED IN A SAFE DIRECTION
AND FINGER OFF THE TRIGGER.

PARTS LIST

NO.	DESCRIPTION	CODE
1	Trigger Housing Assembly	10010682
2	Stock Assembly	10015487
3	Bolt Assembly	10010669
4	Barrel 18" Assembly	10027624
5	Ejector Screw	10010800
6	Left Cartridge Stop Spring	10010701
7	Left Cartridge Stop	10010706
8	Receiver	-
9	Receiver Cover Screw	10010746
10	Trigger Housing Pin	10010719
11	Right Cartridge Stop	10010704
12	Ejector	10010654
13	Elevator	10010702
14	Magazine Tube (5 cartridges)	10027626
15	Magazine Follower	10010655
16	Magazine Spring	10010658
17	Magazine Spring Retainer	10010656
18	Forearm with Action Bar	10010722
19	Magazine Cap	10010824

ROSSI

ALWAYS KEEP THE MUZZLE POINTED IN A SAFE DIRECTION
AND FINGER OFF THE TRIGGER.

PARTS

All firearms require periodic maintenance and inspection which may reveal a need for adjustment or repair. Have your firearm checked by a qualified gunsmith, even if it seems to be working well, since breakage, improper functioning, undue wear, or corrosion of some components may not be apparent from external examination. If you notice ANY mechanical malfunction, do NOT continue to use the firearm. UNLOAD the firearm and take it to a qualified gunsmith immediately.

Our Service Department maintains a full complement of replacement parts for our firearms of current manufacture. Even though most gunsmiths have the knowledge, training and ability to make the necessary repairs to your firearm, the skill and workmanship of any particular gunsmith is totally beyond our control. Should your firearm ever require service, we strongly recommend that you return it to BrazTech. Follow the instructions outlined on the warranty card included with your firearm. Unauthorized adjustments or parts replacement can void your warranty. It is the responsibility of the purchaser to be absolutely certain that any parts ordered from BrazTech are of the correct type and are properly installed by a qualified gunsmith. THIS FIREARM IS A PRECISION MECHANISM AND THE IMPROPER FITTING OF PARTS OR IMPROPER MECHANICAL ADJUSTMENT MAY RESULT IN A DANGEROUS MALFUNCTION, DAMAGE TO THE FIREARM, AND POSSIBLE SERIOUS INJURY TO THE SHOOTER OR TO OTHERS. Therefore, the purchaser and/or installer of parts must accept full responsibility for the correct adjustment of and function of the firearm after such installation has been made or attempted.

ROSSI LONG GUN REPAIR POLICY

What does this policy cover?

This policy covers any service and repair needed by any Rossi long guns imported by Braztech International, L.C. or manufactured in the United States by Braztech International, L.C.

How long does coverage last?

This policy is in effect for one (1) year from the date of original purchase.

What will we do?

BrazTech will service and/or repair all covered products free of charge.

What does this policy not cover?

This policy does not cover stock and forend, sights, accessories, or cosmetic defects, or damage caused by customer abuse at any time. Modifications to the firearm may void this repair policy. This express limited repair policy is the only warranty on this product. This product is sold "as is" and has no implied warranties of merchantability or fitness for a particular purpose. There are no warranties which extend beyond the description on the face hereof.

How do I get service?

To simplify repair and service, Rossi products imported by Braztech International are serviced and repaired by Braztech. Questions regarding the products of either company can be directed to Braztech in Bainbridge, Georgia at 800-948-8029, or in writing to: **C/O Consumer Affairs Department, 100 Taurus Way Bainbridge, GA 39817**

In order to obtain service or repair, describe the problem in writing and send the gun to Braztech at the above address, insured and pre-paid with the written description of the problem enclosed and the receipt indicating the initial date of purchase.

FIREARMS MUST BE SHIPPED UNLOADED. Double check the chamber of your firearm before shipping. If firearms are sent to BrazTech in a loaded condition, we are required by law to notify the Federal authorities. **DO NOT INCLUDE AMMUNITION** with your firearm. This is a violation of federal law.

DO NOT include telescopic sights; custom grips, holsters, ammunition or other accessories with any firearm shipped to us.

When shipping Matched Pair or Matched Set models for repair, all barrels must be included with the firearm. Be sure to repackage the additional barrels in their shipping tubes to prevent damage to the finish and to the stocks during shipment. BrazTech is not responsible for shipment damage.

Our Customer Service Department will contact you by mail advising you when to expect your gun back. We will ship guns serviced because of defect in materials or workmanship insured and pre-paid. There will, of course, be no charge for parts or labor if the repair work performed is covered by this repair policy.

How does state law apply?

This policy gives you specific legal rights and you may also have other rights which vary from state to state.

ROSSI

NOTES

A series of 13 horizontal gray bars, stacked vertically, intended for taking notes. Each bar is a solid light gray rectangle.

NOTES

A series of 12 horizontal grey bars, stacked vertically, intended for taking notes. Each bar is a solid light grey color and spans most of the width of the page.

ROSSI

ALWAYS KEEP THE MUZZLE POINTED IN A SAFE DIRECTION
AND FINGER OFF THE TRIGGER.

A WORD TO THE WISE

Most gun accidents happen because the shooter carelessly violates the single most important rule of safe gun handling: **Always keep the muzzle pointed in a safe direction!**

Important: **Do not discard.** Keep this manual with your firearm. Upon change of ownership, transfer this manual with the firearm.



WWW.ROSSIUSA.COM

© Copyright 2021 Braztech International, L.C.
Rossi is a registered mark of Amadeo Rossi, S.A.

The information in this manual is provided as guidelines and directions for the safe use of your firearm. Braztech and/or Rossi cannot be held responsible for the misuse, illegal or negligent use of our products. We strongly encourage all firearms owners to observe all firearms safety rules to avoid injury or death.

WARNING: This product contains chemicals known to the State of California to cause cancer, or birth defects or other reproductive harm.

Keep this and all firearms and ammunition away from unsupervised children. Firearms safety is everyone's responsibility.

Read Carefully Before Using Your Firearm